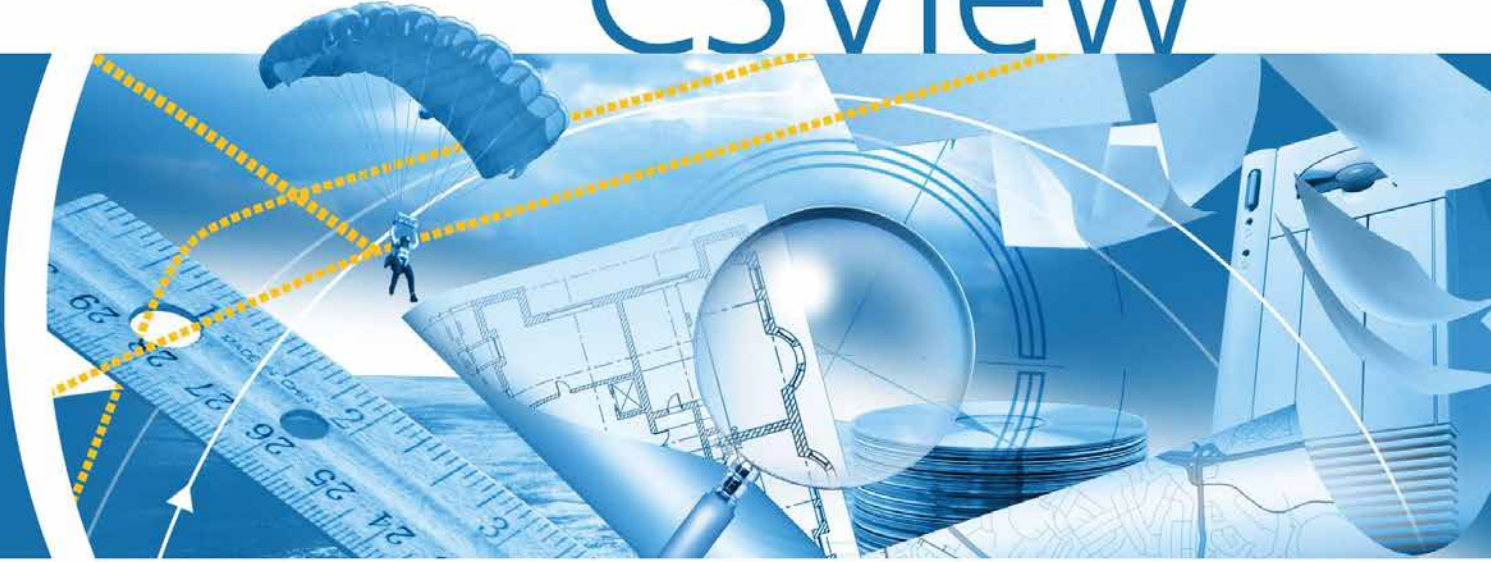


CSView CSView



www.csoft.com

Support for many different file formats, from 2D CAD drawings, to raster and compressed image, to PDF and hybrid files

Extensive image, CAD, raster, vector and hybrid support

CSView 5.0 has been divided on two versions, Free & with Cost

Advanced printing parameters setup

CSsoft

Get the right view!

The amount of information encountered in technical environments today is enormous and typically comes from many different sources. To be able to review these data and collaborate with other users about specific details requires a robust visualization tool that handles many different file formats. CSView provides the maximum flexibility in incorporating diverse data and can be used as a standalone application, integrated with industry standard document management systems or invoked from within any application that contains an ActiveX control.

CSView features

Graphical User Interface:

Users of other Consistent Software products will appreciate that CSView has an XP style GUI that they already know. The user can change the position of application windows, toolbars and menus at will. The powerful customization feature allows to add and to customize menus and toolbars. Also it is possible to associate accelerator keys with any function of CSView.

Viewing Features:

The main function of any viewer is to show the content of a document as fast and precisely as possible. Also it is necessary to supply user with tools to navigate easily in documents. With CSView the user can open documents of different file formats, including raster images, vector CAD-files, PDF and hybrid (raster-vector) documents. Each document can be manipulated with the same set of tools. It is possible to zoom, pan over the drawing, to control the display of layers in layered drawings, such as AutoCAD DWG or DXF files, etc. For better quality of colour raster images halftone display is used.

Printing Features:

In CSView printing can be easily configured for a particular printer. A full print preview is available to check the output settings. It is simple to select what you want to print. The results can be scaled to the desired size or automatically fit the available paper size. Moreover - all predefined printing parameters such as printing paper format and orientation, document position on printing paper, etc can be stored in printing templates and retrieved later.

Integration:

CSView has COM-based architecture for optimal speed, performance, stability and security. It provides two versions - a standalone application and an embedded ActiveX-control application. It is possible to integrate CSView control into an industry standard EDM or PDM system or into any other application that can contain an ActiveX control object.

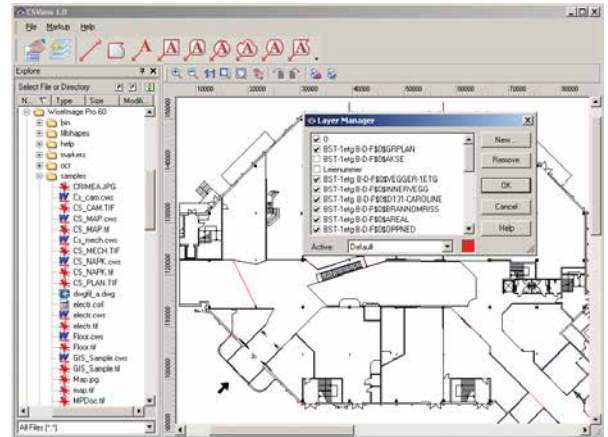
Markup (optional)

Markups are separate files which are linked to their associated documents. They can be stored on any drive or media, making them available to other connected users. This is an invaluable asset, greatly facilitating communication and collaboration between team members. Any viewable document can be annotated to implement collaborative content creation, change requests, ECOs, and other revision and versioning functions.

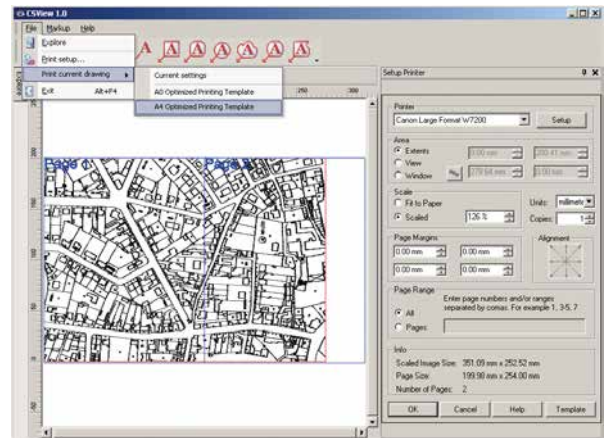
The Markup Plug-in allows for creation of Rectangles, Rounded rectangles, Ovals, Lines, Polylines, Bubbles and Text as markup objects. The user can move, scale, rotate or edit any marked-up object. Markups can contain hyperlinks. A text comment with frames and arrow pointers allows team members to share ideas and highlight problem parts in the design. Multiple colours, semi-transparent mode for backgrounds and various fill styles can be used to distinguish different markups. Furthermore, layers can be used to manage markup. Markup drawing commands utilize raster/vector snap and ortho mode to accurately draw comments.

Supported file formats

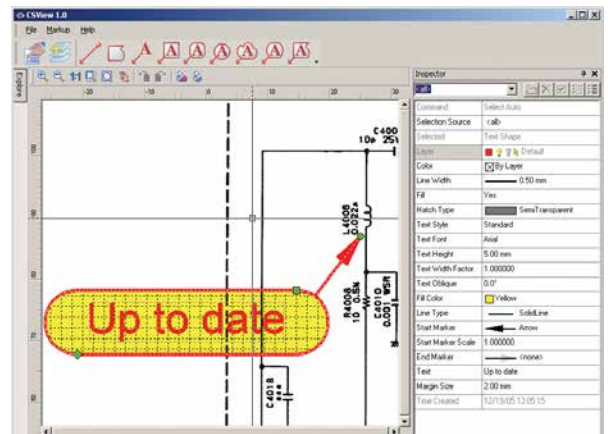
Adobe Portable Document Format (raster only) (*.pdf)
AutoCAD 2000-2013 Drawing File (*.dwg)
AutoCAD DXF (*.dxf)
Microstation Design File (*.DGN)
CALS Files (*.cal, *.cg4, *.gp4, *.mil)
ER Mapper Compressed Wavelet (ECW) (limited edition only)
HPGL File (*.plt, *.hp)
Intergraph Raster Type 24, including multipage files (*.cit)
JEDMICS C4 (*.c4, *.ct4)
JEDMICS T4 (*.tg4, *.t4)
JP2, JPK (JPEG 2000) (*.jp2, *.jpk)
JPEG, JPG (Joint Photographic Experts Group) (*.jpeg, *.jpg)
LizardTech SID File (*.sid)
MIL files (*.MIL)
Portable Network Graphics (*.png)
Run Length Encoded File (*.rlc)
RxVectory 4.x Vector Data File (*.vc4)
RxVectory 5.x Vector Data File (*.vc5)
RxSpotlight 14.0 Workspace File (raster only)(*.ws)
SHP (ESRI shape file) (*.shp)
WisImage 5.x Document (*.cws, *.csrl)
WisImage 14.0 Workspace File (*.cws)
Tagged Image File, including multipage files (*.tif)
Windows Bitmap (*.bmp)
Windows MetaFile (raster only) (*.wmf, *.emf)



Layer management



Printing template



Redlining option

Your local partner is:

CSsoft

CSsoft AS
Adolf Tidemands Gate 36,
N-2000 Lillestrøm, Norway
E-mail: sales@cssoft.com
Internet: www.cssoft.com